

# What's New in Bodyswaps

Find out more about what's new in Bodyswaps for the 2025/6 academic year.



# What is 3.0?

Bodyswaps 3.0 is a major step forward in experiential learning design – combining immersive roleplays, AI feedback, and cross-device access to make soft skills training not just impactful, but scalable.

Why the shift? We worked with over 50 customers to reimagine the experience from the ground up to meet the evolving needs of educators with more flexibility, better feedback, and deeper insight into learner progress.

Learners get a psychologically safe space to practise challenging conversations, receive personalised feedback, and build confidence. Educators get the tools to deliver this seamlessly: customisable learning pathways and assessments, ready-to-go activities, and shareable learner reports.

It's about creating meaningful, measurable learning outcomes while saving educators time.

## Key Features



**AI roleplays:** Practice real conversations with virtual humans and get instant, actionable feedback



**Customisable learner pathways:** Build tailored experiences by mixing and matching modules, exercises, AI roleplays, quizzes and questionnaires



**Assessment-ready:** Quizzes, questionnaires, and learner reports designed to track progress and evidence learning outcomes aligned with your curriculum



**Improved learner oversight:** Access performance data across individuals and cohorts to better support progression

# Learning modules: same foundation, more flexibility

Our immersive learning modules haven't changed in structure — and that's a good thing. They remain scaffolded learning journeys blending observation, interaction, and feedback, carefully designed with subject matter experts and learning designers.

What *has* changed is the way you can access and contextualise them:



Pick and choose the topics that fit your learners.



Embed them into custom Pathways for seamless integration.



Align with frameworks like AACN, NMC, or Ofsted.



## Need a refresher?

All modules are documented with [Tutor Notes and video walkthroughs](#), or you can view an overview of them all [here](#).

# Module Library

## Diversity, Equity & Inclusion

Navigating  
Microaggressions

Bias as a  
Barrier

Recognising  
Privilege

Gender  
Inclusion

## Communication Skills & Public Speaking

Public Speaking  
Essentials

Clear  
Communication

Workplace  
Communication

Active  
Listening

Negotiation  
Skills & Conflict  
Management  
[3 modules]

Teamwork

## Employability & Job Interview

Job Interview:  
Managing  
Anxiety

Job Interview:  
The CAR  
Technique

Career Mindset  
Development

Job Interview:  
Presenting Your  
Best Self

Job Interview:  
Interview  
Simulator

Growth  
Mindset &  
Resilience



# Module Library

## Management & Leadership

Understanding  
Conflict

Resolving  
Conflict

Giving  
Feedback

## Healthcare

Mental Healthcare  
Practitioner

Navigating Angry  
Conversations

Verbal De-escalation  
of Responsive  
Behaviours

Increasing  
Immunization  
Confidence

Equity & Anti-  
Racism in Global  
Healthcare

Communicating in  
a Person-Centred  
Way  
[2 modules]

TeamSTEPPS®  
Toolkit &  
Simulator

Using Values  
to Guide  
Actions

## Customer Service

Managing Difficult  
Situations

Improving Customer  
Experience

# Activities: Bite-Sized, Big Impact

Activities are **short, standalone units** taken from full modules — perfect for **quick learning bursts** or **drop-in sessions**.

Each activity zooms in on a single practice interaction: whether that's an observation, a scaffolded choice, or a freeform response.



## Identifying your strengths and non-negotiables

In this activity, learners explore their personal strengths and non-negotiables that'll help them land a job where they can truly thrive. The learner answers a multiple choice questionnaire about their values, work approach, and lifestyle. Based on the results, virtual coaches Ashley and Abeeku suggest some work-related non-negotiables to help the learner pursue the right roles and showcase their best skills. They also invite the learner to discuss some of these strengths in their own words.

### Learning objectives

- Identify your strengths and non-negotiables in preparation for job interviews

© 5 min running time

You can browse the full library of activities or search directly while building a Pathway.

They're ideal for:

- Tight timetables
- Asynchronous assignments
- Building skill confidence, one step at a time

## Activity library:

Find descriptions of our activities [here](#).



# Customise scenarios with our AI roleplays

AI roleplays let learners practise essential skills through **free-flowing, emotionally responsive conversations** with virtual humans. Each interaction is unique: learners speak in their own words, triggering natural, unscripted dialogue shaped by their input. Educators **customise** the experience to fit learning goals, while the AI ensures every learner receives **relevant, real-time feedback** in a psychologically safe space.



## Why this works for educators

- Tailored, human-like practice at scale: Every learner gets a one-of-a-kind interaction shaped by their own words.
- Controlled, supportive learning: Customisable templates let educators define parameters, while the AI-led dialogue remains organic.
- Flexible integration into broader learning journeys: Easily slot roleplays into multi-unit pathways alongside theory, quizzes, and reflection.

## AI roleplay showcase webinar



## AI roleplay tutor notes



# AI roleplay templates

## Debating

This roleplay experience fosters critical soft skills such as: good listening, emotional regulation and persuasive communication.

Additionally, by receiving personalised feedback on their performance, learners can identify areas for growth, without the added pressure or anxiety often associated with live debates.



## Job Interview

Build tailored interview scenarios for your learners: upload job descriptions, generate relevant questions, and choose who their interviewers will be.

In addition, learners have the option to ask for real-time help within the interview, and you can turn on AI-powered follow-up questions to increase the difficulty.

# AI roleplay templates

## Active Listening in the Workplace

Hone your active listening skills with this dynamic, AI-powered simulator. You can customise the virtual work colleague and topic of the free-flowing conversation to practice making others feel truly heard.



## Active Listening in Healthcare

Our Active Listening in Healthcare roleplay is an AI-powered, free-flowing conversation simulator where learners can practice key active listening skills with a virtual patient and receive tailored feedback for improvement.

# AI roleplay templates

## Open Conversation

Create customisable roleplay scenarios where the educator determines the conversation's topic and configures the avatar's persona and communication style, along with the learner's role.

You can also customise the assessment criteria in addition to default metrics like gaze, filler words, and body language.



## Building Rapport

Tailor scenarios for your learners in different industry settings. Learners will be assessed on the 3Cs: Connection, Comfort & Curiosity.



# AI roleplay templates: Coming soon

## De-escalation

Set scenarios for learners to practise de-escalation. Learners will engage with avatars whose roles, contexts, and emotional triggers are defined.



## In Planning / Development

De-Escalation

Enhanced Public  
Speaking Simulator

Multilingual  
Roleplays

# Learner Reports

We've introduced Learner Reports as a way to give **further insight** into how learners are doing - insight that educators can view directly on Bodyswaps Go.

Each report provides **personalised, actionable feedback** based on learner performance, including skill highlights, improvement tips, and a breakdown of responses. They support both individual growth and cohort-level insight, helping educators **understand progress** without the need for manual tracking.

### Performance

Click each of the performance categories below to view more information. Use the filter buttons to hide/show selections.

Body language

NotProcessed ^

Eye contact

NotProcessed ^

Connection — Finding common ground

Good v

Erica, you jumped right in by sharing a bit about yourself as a pastry chef, which is a great way to start building a connection. Next time, try to find more common ground by relating your experiences or feelings to what Nicole shares. This will help deepen the conversation and build a stronger bond!

Comfort — Feeling at ease

Good ^

Curiosity — Showing interest

Excellent ^



## Looking to learn more?

Explore our [help centre article here](#) to learn more about how to access your Learners' reports.



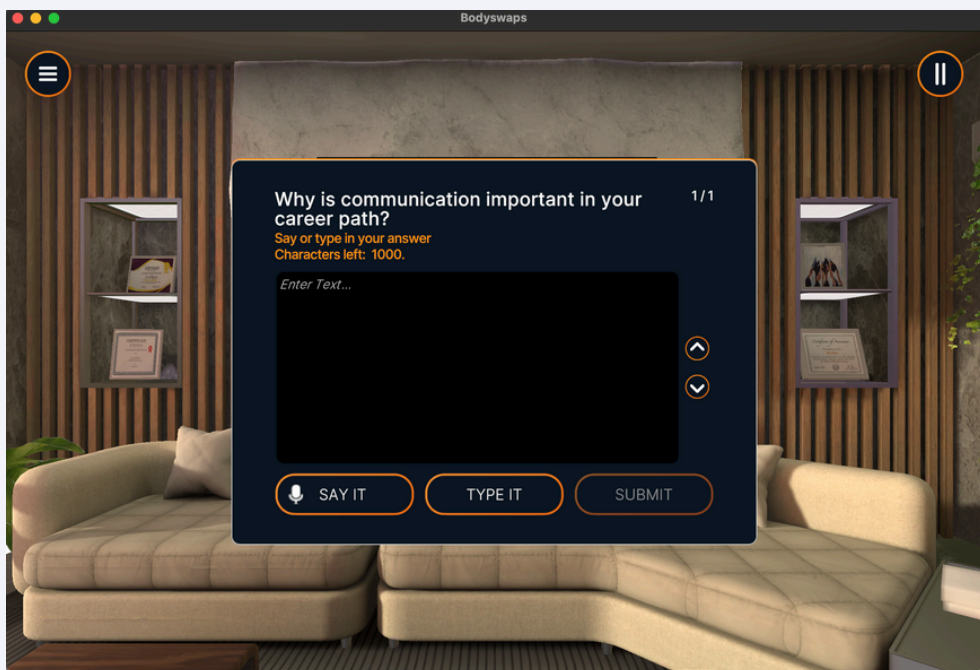


# Quizzes and questionnaires

Quizzes and questionnaires help consolidate learning, spark reflection, and generate meaningful data.

Educators can embed **custom multiple-choice quizzes, Likert scales, and open-ended self-reflection** at any point in a learner's journey.

Whether checking knowledge or capturing personal growth, these tools provide **flexible, low-lift** ways to **measure** understanding.



**Assess as you go: quizzes and questionnaires can be built right into pathways.**

# Pathways

Pathways are structured, immersive learning journeys that adapt to the needs of every learner.

With the pathway builder, Admins and Coaches can weave together scaffolded learning modules, bite-sized theory and practice exercises, AI roleplays, quizzes, and questionnaires into a tailored experience that truly resonates with their learners.

## How to build a pathway in Bodyswaps Go

- Step 1: Open the Pathways tab in Bodyswaps Go.
- Step 2: Select **Create Pathway**
  - Enter a name for your Pathway
  - Choose the visibility setting
    - Private: only visible to you
    - Organisation: visible to other admins/coaches in your organisation
  - Add a brief description to help colleagues understand the goal of the Pathway
  - Click **Next – Build your Pathway**
- Step 3: Add **Units**
  - Choose from the following unit types:
    - Simulators
    - Exercises
    - Modules
    - Quizzes
    - Questionnaires



To assign a specific AI Roleplay: Click **Customise** after adding it to your Pathway.



# Pathways

## Assigning pathways via a class

Easily add Pathways to any class via the Classes tab.

Select or create a class, then use the Assignments tab to browse, preview, and assign Pathways directly.

👉 [\[See how in Classes Help Center\]](#)

## Accessing pathways anonymously

Learners can now join Pathways without a class assignment. Simply enter a **My Modules** or **Anonymous** code in the app to unlock the Pathways tab, where you'll see associated Pathways.

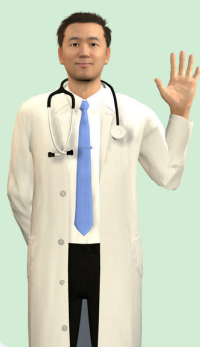
👉 [\[See how in Pathways Help Center\]](#)

Prefer something ready to go? Choose from our [library of pre-built pathways](#), carefully constructed by our Learning Designers to target specific learning goals and a variety of audiences.



**Interprofessional  
Communication in  
Healthcare**

**Emotional  
Intelligence &  
Personal Impact:  
Chapters 1, 2, 3, & 4**



**Navigating Difficult  
Patient Interactions**

**Getting Interview  
Ready: Chapters 1,  
2, 3, & 4**



# Classes update

Classes give Admins and Coaches an organised space to assign content, enroll learners and track progress with ease.

With its refreshed interface, it's now simpler than ever to create classes and monitor learners' activity.

With Classes, you can:

- Register a group of learners, or allow them to self-enrol for your class
- Assign pathways or modules directly to a group
- Monitor learner progress at a glance

For a step-by-step guide, explore our updated [Classes 3.0 Help Article](#).



### Communication 101

Created by Erica Davis

Dashboard

Learners

Assignments

Statistics

#### Class Access Code

Single class codes allow learners to select their own identity in the app.

-

-

-

-

-

-

Generate code

#### Self-enrollment Form

Share this link or QR code to a web form where learners can enroll and get a unique login code.

<https://go.bodyswaps.co/#/enrol?enrollmentKey=83d11eb36e1994cf970b8c80a2ff8741&locale=en&reg=eu>

#### Assignment Progress

To add or amend current assigned Bodyswaps content please use the Assignments tab.

Emotional Intelligence & Personal Impact: Chapter 1 - The basics of self-awareness

0 Completed | 1 Started | 6 Not Started

Erica's Test - L

0 Completed | 3 Started | 4 Not Started

Active Listening In Healthcare

0 Completed | 1 Started | 6 Not Started

AI Roleplay Simulator

0 Completed | 0 Started | 7 Not Started

TeamSTEPPS® Simulator

0 Completed | 1 Started | 6 Not Started

Building Rapport

0 Completed | 0 Started | 7 Not Started

# Tracking engagement & results

Admins and Coaches can easily monitor learner progress through pathways assigned in a Class. The Assignment Progress section gives you the insights you need — by unit, by learner, or through detailed assessment data.

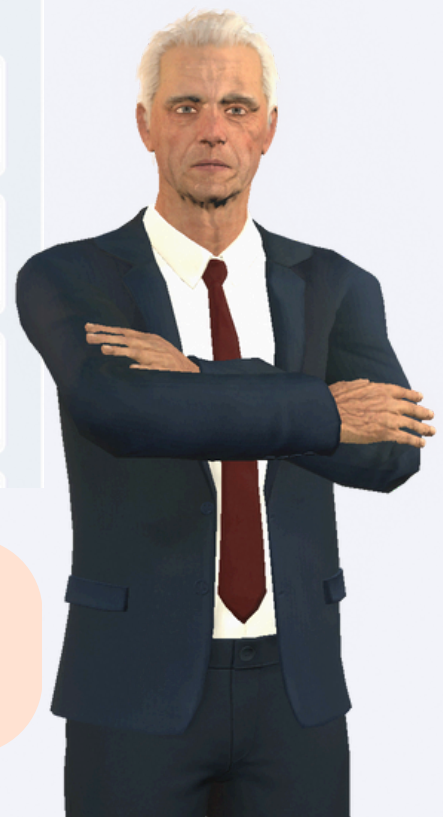
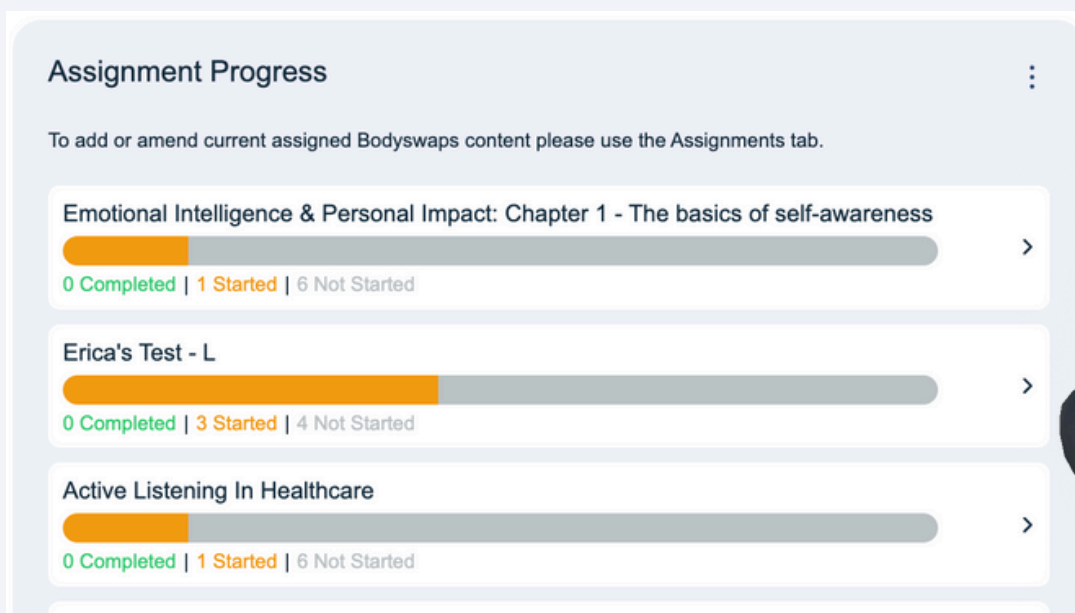
## Class Dashboard Overview

- Find all your Assignments under Assignment Progress
- Switch views: By Unit or By Learner
- Access quiz and questionnaire results for deeper insights

## Export Data

Need to work with results offline?

1. Click the three dots next to Assignment Progress
2. Choose Export quiz and questionnaire results



With these tools, you'll always have a clear picture of how learners are engaging, where they're excelling, and where they may need extra support.

# Useful Resources



## [Community Portal](#)

A one stop shop for deployment support and successful deployment examples you can browse for inspiration.



## [Help Centre](#)

A range of technical support articles on Bodyswaps Go and support for learners and administrators.



## [Bodyswaps Academy](#)

Across four essential sections, this course covers everything you need to know: from the foundations through to deployment.



## [Content Resources](#)

View the full range of Bodyswaps modules, exercises and roleplays.



## [Bodyswaps Go](#)

Log in to manage your users, enrol learners into classes, track individual learner progress and view aggregated usage stats



## [YouTube](#)

Check out our trailers, case study videos, and webinar recordings on our YouTube channel.

